

STAPLER (S-F-1108) NO.10



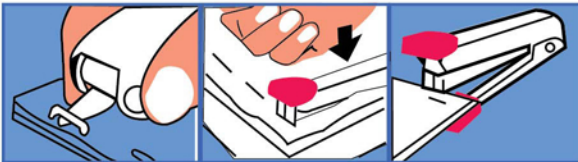
>>S-F-1108

- 12 PCS / MEDIUM BOX
- 300 PCS / CARTON

CTN M ³	L x W x H (mm)
	520 x 470 x 160

S-F-1108 (1pc)	S-F-1108 (12pcs)
9 557546 900628	9 557546 900949

Staple-Loading
Pull top-cover fully back and insert staple.



BOX OF 1 PC



MED BOX OF 12 PCS